

CERTIFICATE OF LOCATION OF GOVERNMENT CORNER

South 1/4 Corner of Section 1, Township 106, Range 42, 5th P.M.

STATE OF MINNESOTA, County of Murray

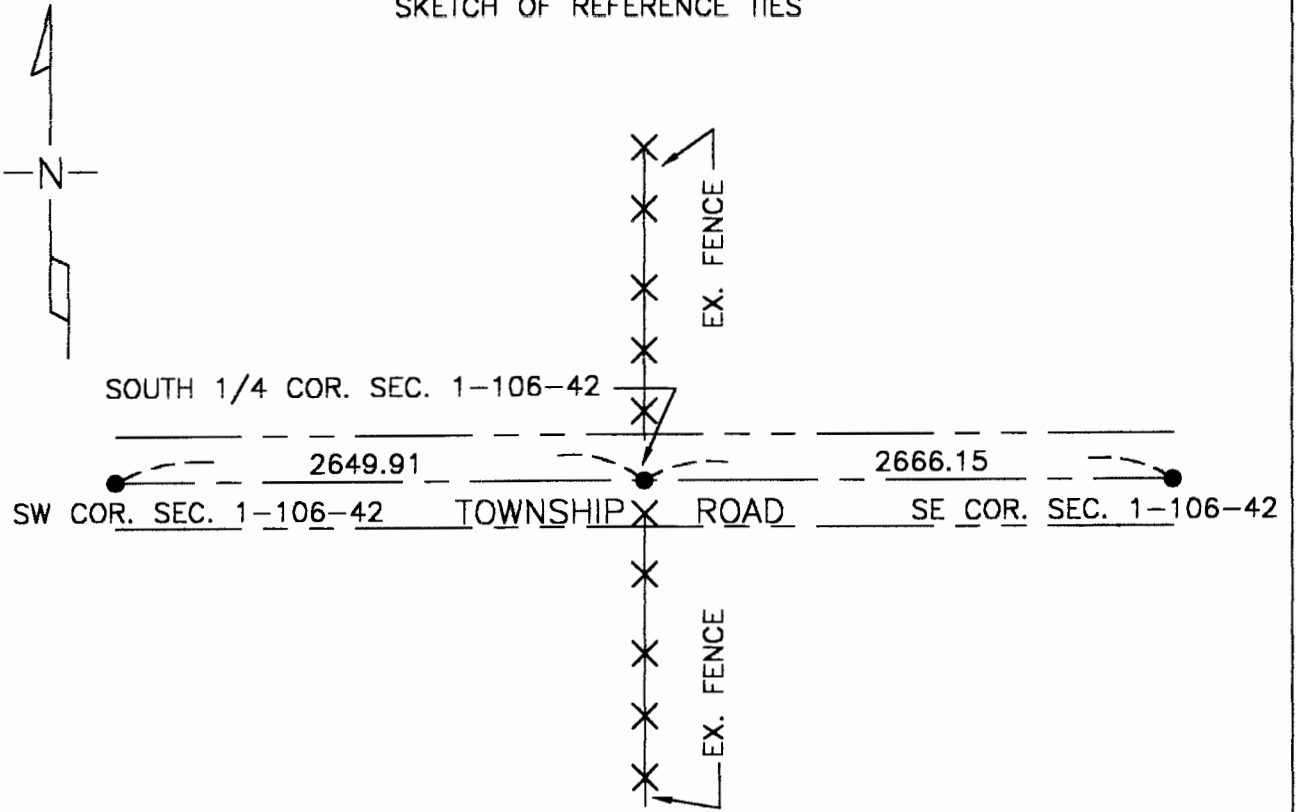
At the corner location shown on the sketch

On 8/31/98 found a 6" stone 3.5' deep

left monument as found lowered monument, removed monument (explain)

On 8/31/98 placed a 1" iron pipe w/cap no. 23008 over top of stone

SKETCH OF REFERENCE TIES



Statement of evidence relative to this corner location is on back of page.

I hereby certify that this document and the data contained herein was prepared by me or under my direct supervision.

Perry L. Zieske 9-20-00
SIGNATURE DATE

MN. REGISTRATION NO. 23008

- Land Surveyor, Professional Engineer
 County Surveyor, County Engineer

OFFICE OF THE COUNTY RECORDER

I hereby certify that this document was filed in the Co. Recorder's Office at _____ on the

_____ day of SEP 22 2000

County Recorder James V. Johnson
By _____, Deputy

DOCUMENT NO. _____